



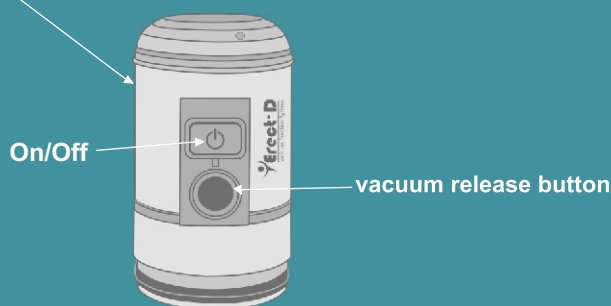
Erect-D VACUUM Erection System is a medically-proven high quality penis pump, which is a non-invasive, safe and effective solution to follow a *Sexual Fitness* routine and induce on demand drug-free instant erections as a solution to *Erectile Dysfunction*.

Economically designed and engineered, Erection System consists of a cylinder that fits over the penis, with an electronic motor to create suction and induce a vacuum environment around the penis which draws blood into it and helps the penis to become engorged.

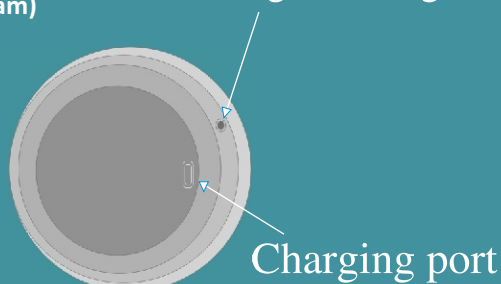
Note:

Charged your **Erect-D** before using (See diagram)

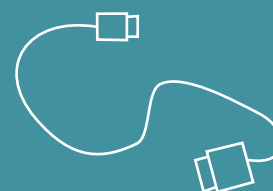
Erect-D Vacuum Pump



On Charging Red light
Full charge Blue light



Charging Cable



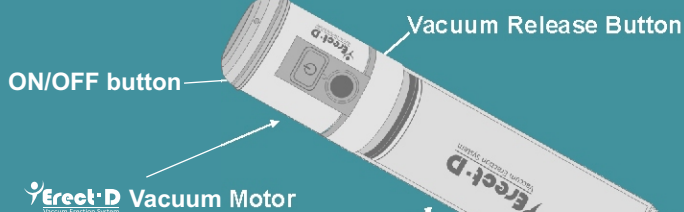
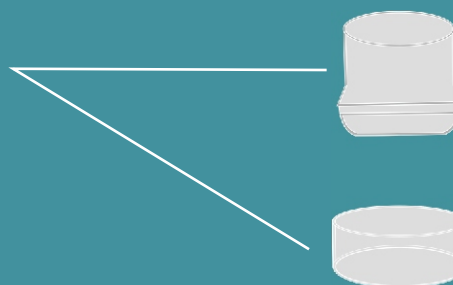
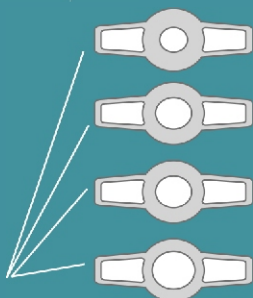
Note: Read instructions carefully before using



If instructions are not followed, Erection System will not work.

Adapter: Custom Fitting Adapter Inserts for different penis sizes, to be placed in the penile tube after the ring loading on penile tube then cone is removed.

Put a little amount of lubricant around the base of the penis, the shaft, and glans (see figure).



Medical Grade Cylinder

Easy Loading Conical System fits into penile tube to assist in placing ring on penile tube



Lubricant
for personal use

Erect-D Erection Assistant Rings / Constriction Rings:
to help maintain the erection. For different penile thicknesses